



A LETTERS JOURNAL EXPLORING  
THE FRONTIERS OF PHYSICS

OFFPRINT

**Microscopic theory for the phase separation of  
self-propelled repulsive disks**

JULIAN BIALKÉ, HARTMUT LÖWEN and THOMAS SPECK

EPL, **103** (2013) 30008

Please visit the new website  
[www.epljournal.org](http://www.epljournal.org)



A LETTERS JOURNAL EXPLORING  
THE FRONTIERS OF PHYSICS

## AN INVITATION TO SUBMIT YOUR WORK

[www.epljournal.org](http://www.epljournal.org)

### **The Editorial Board invites you to submit your letters to EPL**

EPL is a leading international journal publishing original, high-quality Letters in all areas of physics, ranging from condensed matter topics and interdisciplinary research to astrophysics, geophysics, plasma and fusion sciences, including those with application potential.

The high profile of the journal combined with the excellent scientific quality of the articles continue to ensure EPL is an essential resource for its worldwide audience. EPL offers authors global visibility and a great opportunity to share their work with others across the whole of the physics community.

### **Run by active scientists, for scientists**

EPL is reviewed by scientists for scientists, to serve and support the international scientific community. The Editorial Board is a team of active research scientists with an expert understanding of the needs of both authors and researchers.



**IMPACT FACTOR**  
**2.753\***  
\* As ranked by ISI 2010

[www.epljournal.org](http://www.epljournal.org)

**IMPACT FACTOR**

**2.753\***

\* As listed in the ISI® 2010 Science  
Citation Index Journal Citation Reports

**OVER**

**500 000**

full text downloads in 2010

**30 DAYS**

average receipt to online  
publication in 2010

**16 961**

citations in 2010  
37% increase from 2007

*"We've had a very positive experience with EPL, and not only on this occasion. The fact that one can identify an appropriate editor, and the editor is an active scientist in the field, makes a huge difference."*

**Dr. Ivar Martin**

Los Alamos National Laboratory,  
USA

**Six good reasons to publish with EPL**

We want to work with you to help gain recognition for your high-quality work through worldwide visibility and high citations.

- 1 Quality** – The 40+ Co-Editors, who are experts in their fields, oversee the entire peer-review process, from selection of the referees to making all final acceptance decisions
- 2 Impact Factor** – The 2010 Impact Factor is 2.753; your work will be in the right place to be cited by your peers
- 3 Speed of processing** – We aim to provide you with a quick and efficient service; the median time from acceptance to online publication is 30 days
- 4 High visibility** – All articles are free to read for 30 days from online publication date
- 5 International reach** – Over 2,000 institutions have access to EPL, enabling your work to be read by your peers in 100 countries
- 6 Open Access** – Articles are offered open access for a one-off author payment

Details on preparing, submitting and tracking the progress of your manuscript from submission to acceptance are available on the EPL submission website [www.epletters.net](http://www.epletters.net).

If you would like further information about our author service or EPL in general, please visit [www.epljournal.org](http://www.epljournal.org) or e-mail us at [info@epljournal.org](mailto:info@epljournal.org).

**EPL is published in partnership with:**



European Physical Society



Società Italiana  
di Fisica



EDP Sciences

**IOP Publishing**

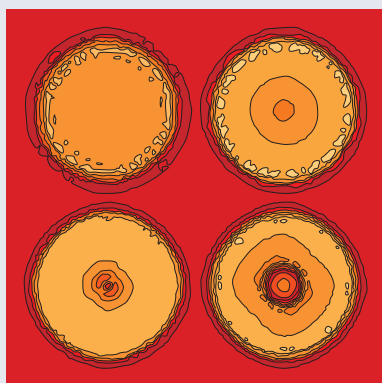
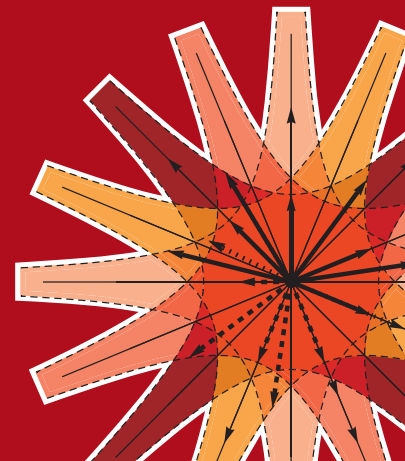
IOP Publishing



A LETTERS JOURNAL  
EXPLORING THE FRONTIERS  
OF PHYSICS

**EPL Compilation Index**

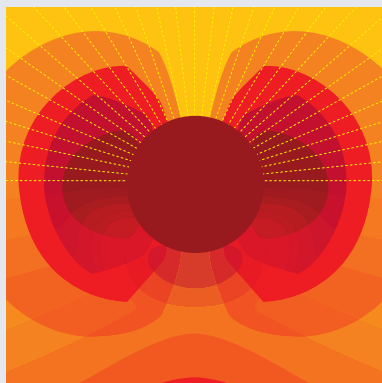
[www.epljournal.org](http://www.epljournal.org)



Biaxial strain on lens-shaped quantum rings of different inner radii, adapted from **Zhang et al** 2008 *EPL* **83** 67004.



Artistic impression of electrostatic particle-particle interactions in dielectrophoresis, adapted from **N Aubry and P Singh** 2006 *EPL* **74** 623.



Artistic impression of velocity and normal stress profiles around a sphere that moves through a polymer solution, adapted from **R Tuinier, J K G Dhont and T-H Fan** 2006 *EPL* **75** 929.

Visit the EPL website to read the latest articles published in cutting-edge fields of research from across the whole of physics.

Each compilation is led by its own Co-Editor, who is a leading scientist in that field, and who is responsible for overseeing the review process, selecting referees and making publication decisions for every manuscript.

- Graphene
- Liquid Crystals
- High Transition Temperature Superconductors
- Quantum Information Processing & Communication
- Biological & Soft Matter Physics
- Atomic, Molecular & Optical Physics
- Bose-Einstein Condensates & Ultracold Gases
- Metamaterials, Nanostructures & Magnetic Materials
- Mathematical Methods
- Physics of Gases, Plasmas & Electric Fields
- High Energy Nuclear Physics

If you are working on research in any of these areas, the Co-Editors would be delighted to receive your submission. Articles should be submitted via the automated manuscript system at [www.epletters.net](http://www.epletters.net)

If you would like further information about our author service or EPL in general, please visit [www.epljournal.org](http://www.epljournal.org) or e-mail us at [info@epljournal.org](mailto:info@epljournal.org)



**IOP Publishing**

**Image:** Ornamental multiplication of space-time figures of temperature transformation rules (adapted from T. S. Bíró and P. Ván 2010 *EPL* **89** 30001; artistic impression by Frédérique Swist).

# Microscopic theory for the phase separation of self-propelled repulsive disks

JULIAN BIALKÉ, HARTMUT LÖWEN and THOMAS SPECK

*Institut für Theoretische Physik II, Heinrich-Heine-Universität Düsseldorf - D-40225 Düsseldorf, Germany, EU*

received 5 June 2013; accepted in final form 29 July 2013

published online 29 August 2013

PACS 05.40.-a – Fluctuation phenomena, random processes, noise, and Brownian motion

PACS 64.75.Xc – Phase separation and segregation in colloidal systems

**Abstract** – Motivated by recent experiments on colloidal suspensions, we study analytically and numerically a microscopic model for self-propelled particles lacking alignment interactions. In this model, even for purely repulsive interactions, a dynamical instability leading to phase separation has been reported. Starting from the many-body Smoluchowski equation, we develop a mean-field description based on a novel closure scheme and derive the effective hydrodynamic equations. We demonstrate that the microscopic origin of the instability is a force imbalance due to an anisotropic pair distribution leading to self-trapping. The phase diagram can be understood in terms of two quantities: a minimal drive and the force imbalance. At sufficiently high propulsion speeds there is a reentrance into the disordered fluid.

Copyright © EPLA, 2013

**Introduction.** – Living “active matter” [1] ranging from bacterial suspensions [2] to flocks of birds [3] is an emerging paradigm on the interface of physics, chemistry and biology. These systems are composed of identical subunits, which are able to show collective dynamical behavior such as swarming [4], active clustering [5], and even micro-bacterial turbulence [6]. The fact that every individual by itself is far from equilibrium allows a virtually unlimited number of propagation rules to be devised and, moreover, the emergence of purely dynamical phases. This is in contrast to the phenomenon of equilibrium phase separation [7] such as the liquid-vapor transition, which can be understood on thermodynamic grounds going back to the seminal work of van der Waals [8]. For one-component systems as considered here, equilibrium phase separation requires attractive interactions.

Theoretical progress in statistical physics is often based on insights gained from the study of models that are simple but still capture an essential feature of real, complex systems. Self-propelled particles constitute one such class of models that has been very successful in describing non-equilibrium collective behavior. For example, a large class of models [9,10] —the most famous of which is the Vicsek [4] model— describe particles that move with constant velocity and align their orientations with the average orientation of neighboring particles. Such an alignment can also arise due to volume exclusion as has been observed for granular rods [11]. In the Vicsek model, a dynamical

phase transition from an ordered into an unordered phase takes place as a function of the orientational noise strength.

Following earlier work [12,13], suspensions of self-propelled spherical colloidal particles have recently been realized experimentally. The propulsion mechanism is difusiophoresis: either the catalytic decomposition of hydrogen peroxide on a platinum hemisphere [14] or hematite in conjunction with light [15], or the reversible local demixing of a near-critical water-lutidine mixture [16,17]. The non-equilibrium behavior of these driven suspensions is unexpectedly rich and includes a stable fluid of “living” clusters that form, break, and merge but with a steady mean size [15]; and a phase separation, *i.e.*, the largest cluster grows until it is composed of a finite fraction of the particles [17]. In a model of run-and-tumble bacteria, Tailleur and Cates have shown theoretically that such a dynamical instability resembling liquid-vapor phase separation can be attributed to a density-dependent mobility (or propulsion speed) [18–20]. Non-equilibrium phase separation has been shown to also occur in computer simulations of a minimal model for self-propelled repulsive disks, where particle orientations are independent and can be modelled as free rotational diffusion [17,21,22]. Although recently a link of run-and-tumble motion to active Brownian motion has been made [23], a connection between the microscopic details and the large-scale dynamical instability leading to phase separation has been missing.

In this letter, we close this gap between numerical simulations and experiments of colloidal suspensions on one side and phenomenological models positing a density-dependent mobility on the other side by deriving an explicit expression for the effective swimming speed from first principles. To this end, we start from the full many-body Smoluchowski equation of the minimal model and obtain the effective evolution equation for a single tagged particle. We employ a novel scheme to close the ensuing hierarchy of evolution equations and discuss the approximations involved. The effective swimming speed of the tagged particle is reduced compared to its free swimming speed due to a force imbalance that is quantified by the pair distribution function. We finally test our results employing Brownian dynamics computer simulations for different repulsive pair potentials.

**Model.** – We consider a suspension of  $N$  colloidal particles with number density  $\bar{\rho}$  moving in two dimensions. The coupled equations of motion are

$$\dot{\mathbf{r}}_k = -\nabla_k U + v_0 \mathbf{e}_k + \boldsymbol{\xi}_k, \quad (1)$$

where the Gaussian noise  $\boldsymbol{\xi}_k$  models the interactions with the solvent. The noise has zero mean and temporal short-ranged correlations

$$\langle \boldsymbol{\xi}_k(t) \boldsymbol{\xi}_{k'}^T(t') \rangle = 2\mathbf{1} \delta_{kk'} \delta(t - t'). \quad (2)$$

Particles interact through a pair potential  $u(r)$  with total potential energy  $U = \sum_{k < k'} u(|\mathbf{r}_k - \mathbf{r}_{k'}|)$ . In addition to the conservative force due to the potential energy, every particle is propelled with a constant speed  $v_0$  in the direction

$$\mathbf{e}_k = \begin{pmatrix} \cos \varphi_k \\ \sin \varphi_k \end{pmatrix} \quad (3)$$

characterized by the angle  $\varphi_k$  the particle orientation encloses with the  $x$ -axis. The speed  $v_0$  corresponds to the free swimming speed in a dilute suspension. It characterizes the propelling force without specifying details of the actual propulsion mechanism. Throughout, we employ reduced units with a length scale  $a$  related to the particle size, unit of energy given by the thermal energy, and unit of time  $\tau_0 = D_0/a^2$ , where  $D_0$  is the bare diffusion coefficient (as measured in a dilute passive suspension). We assume that particle orientations undergo free diffusion with rotational diffusion coefficient  $D_r$ ,

$$\langle \dot{\varphi}(t) \dot{\varphi}(t') \rangle = 2D_r \delta(t - t'). \quad (4)$$

Real colloidal particles are of course three-dimensional objects (*i.e.*, spheres) and thus rotate in three dimensions even if their translational motion is confined to (quasi) two dimensions. However, for the sake of simplicity, here we assume that particles rotate only about the fixed  $z$ -axis. Moreover, for particles obeying the no-slip boundary condition rotational and translational diffusion coefficient are coupled. Nevertheless, we will treat  $D_r$  as a free parameter for most of our considerations.

**Derivation.** – The time evolution of the normalized joint probability distribution  $\psi_N(\{\mathbf{r}_k, \varphi_k\}; t)$  is governed by the Smoluchowski equation

$$\partial_t \psi_N = \sum_{k=1}^N \nabla_k \cdot [(\nabla_k U) - v_0 \mathbf{e}_k + \nabla_k] \psi_N + D_r \sum_{k=1}^N \frac{\partial^2 \psi_N}{\partial \varphi_k^2}. \quad (5)$$

The first step is to derive an approximate equation of motion for the projected density

$$\psi_1(\mathbf{r}_1, \varphi_1; t) = \int d\mathbf{r}_2 \cdots d\mathbf{r}_N \int d\varphi_2 \cdots d\varphi_N N \psi_N \quad (6)$$

of a single particle. Since particles are identical, in the following we simply designate particle 1 as the tagged particle and drop the subscript.

Performing the integration, eq. (5) becomes

$$\partial_t \psi_1 = -\nabla \cdot [\mathbf{F} + v_0 \mathbf{e} \psi_1 - \nabla \psi_1] + D_r \partial_\varphi^2 \psi_1 \quad (7)$$

with mean force

$$\begin{aligned} \mathbf{F}(\mathbf{r}, \varphi; t) &\equiv \int d\mathbf{r}_2 \cdots d\mathbf{r}_N \int d\varphi_2 \cdots d\varphi_N (-\nabla_1 U) N \psi_N \\ &= - \int d\mathbf{r}' u'(|\mathbf{r} - \mathbf{r}'|) \frac{\mathbf{r} - \mathbf{r}'}{|\mathbf{r} - \mathbf{r}'|} \psi_2(\mathbf{r}, \varphi, \mathbf{r}'; t) \end{aligned} \quad (8)$$

exerted by the surrounding particles onto the tagged particle. Here,  $\psi_2(\mathbf{r}, \varphi, \mathbf{r}'; t)$  is the two-body density distribution function to find another particle at  $\mathbf{r}'$  (with arbitrary orientation) together with the tagged particle at  $\mathbf{r}$  with orientation  $\varphi$ . Following this scheme leads to the well-known BBGKY hierarchy of coupled equations [24].

In order to proceed, we need to find an approximate closure. The two-body density  $\psi_2$  can be decomposed into the product of the conditional probability  $g(|\mathbf{r} - \mathbf{r}'|, \theta | \mathbf{r}, \varphi)$  to find another particle at position  $\mathbf{r}'$  given there is a self-propelled particle at  $\mathbf{r}$  with orientation  $\mathbf{e}$  times the probability to find a particle at  $\mathbf{r}$ ,

$$\psi_2(\mathbf{r}, \varphi, \mathbf{r}'; t) = \psi_1(\mathbf{r}, \varphi; t) \bar{\rho} g(|\mathbf{r} - \mathbf{r}'|, \theta | \mathbf{r}, \varphi; t). \quad (9)$$

Here,  $\theta$  is the angle enclosed by the displacement vector  $\mathbf{r}' - \mathbf{r}$  (pointing away from the tagged particle) and the orientation  $\mathbf{e}$ .

Inserting the decomposition eq. (9) into eq. (8), the projection of the force onto the orientation reads  $\mathbf{e} \cdot \mathbf{F} = -\bar{\rho} \zeta \psi_1$  with coefficient

$$\zeta \equiv \int_0^\infty dr r [-u'(r)] \int_0^{2\pi} d\theta \cos \theta g(r, \theta), \quad (10)$$

where  $u(r)$  is the pair potential. So far, we have made no approximations. To proceed, we assume that the coefficient  $\zeta$  is independent of the position of the tagged particle, which is equivalent to assuming that the system is homogeneous. Moreover, we neglect the time dependence of the pair distribution function,  $g(r, \theta | \mathbf{r}, \varphi; t) \approx g(r, \theta)$ . These are sufficient conditions to study the onset of a

possible dynamical instability of an initially homogeneous suspension. We decompose the mean force in the (non-orthogonal) basis spanned by the orientation  $\mathbf{e}$  and the density gradient  $\nabla\psi_1$ , and expand to linear order of  $|\nabla\psi_1|$  with result

$$\mathbf{F} = (\mathbf{e} \cdot \mathbf{F})\mathbf{e} + (1 - D)\nabla\psi_1 + \mathcal{O}(|\nabla\psi_1|^2), \quad (11)$$

where formally  $D = 1 - \mathbf{F} \cdot [\nabla\psi_1 - \mathbf{e}(\mathbf{e} \cdot \nabla\psi_1)]/|\nabla\psi_1|$ . Hence, eq. (7) now reads

$$\partial_t\psi_1 = -\nabla \cdot [v\mathbf{e} - D\nabla]\psi_1 + D_r\partial_\varphi^2\psi_1, \quad (12)$$

which is the desired closed equation for the temporal evolution of the tagged particle density. Here, the effective swimming speed

$$v \equiv v_0 - \bar{\rho}\zeta \quad (13)$$

enters. In the following, we assume that  $D$  is a constant coefficient that does not depend on the position of the tagged particle. It thus corresponds to the long-time diffusion coefficient of the passive suspension ( $v_0 = 0$ ). Equation (12) together with eq. (13) constitutes our first main result.

The physical picture we have in mind is the following: As shown in fig. 1(a), the propulsion of particles leads to a pair distribution  $g(r, \theta)$  that is anisotropic, *i.e.*, there is a depletion zone behind the tagged particle and an excess zone in front of the particle. The effective swimming speed  $v$  is reduced due to this anisotropy. This is intuitively clear since particles block each other in a dense suspension due to volume exclusion or repulsive interactions. The projection coefficient  $\zeta$  quantifies how strongly the tagged particle is slowed down by its neighbors as a function of the particle density  $\bar{\rho}$ . Note that for passive particles with  $v_0 = 0$  the pair distribution  $g(r)$  becomes isotropic and, therefore,  $\zeta = 0$  vanishes.

**Dynamical instability.** – To make the connection to previous work on mobility-induced phase separation [23], we now cast eq. (12) into the form of the more familiar effective hydrodynamic equations (see also refs. [25,26]). To this end we introduce the particle density

$$\rho(\mathbf{r}, t) \equiv \int_0^{2\pi} d\varphi\psi_1(\mathbf{r}, \varphi, t) \quad (14)$$

and the orientational field

$$\mathbf{p}(\mathbf{r}, t) \equiv \int_0^{2\pi} d\varphi\mathbf{e}\psi_1(\mathbf{r}, \varphi, t) \quad (15)$$

as the first moment of the tagged particle orientation. Plugging in eq. (12), we find

$$\partial_t\rho(\mathbf{r}, t) = -\nabla \cdot [v\mathbf{p}(\mathbf{r}, t) - D\nabla\rho(\mathbf{r}, t)], \quad (16)$$

which couples the temporal evolution of the density to the orientational field. The orientational field in turn couples to an integral involving

$$\mathbf{e}\mathbf{e}^T = \frac{1}{2}\mathbf{1} + \frac{1}{2} \begin{pmatrix} \cos 2\varphi & \sin 2\varphi \\ \sin 2\varphi & -\cos 2\varphi \end{pmatrix}. \quad (17)$$

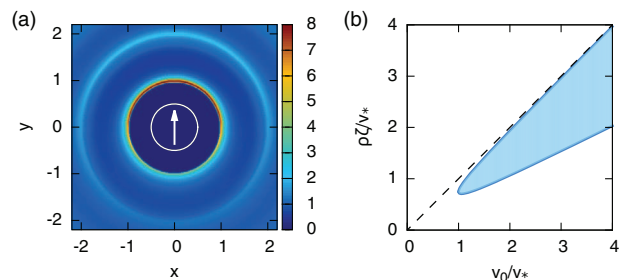


Fig. 1: (Color online) (a) Anisotropic pair distribution function  $g(r, \theta)$  for a tagged particle (white circle) at the origin with its orientation pointing along the  $y$ -axis (arrow). There is a larger probability to find another particle in front of the tagged particle compared to finding it behind. (Shown is simulation data for hard disks at area fraction  $\phi = 0.5$  and speed  $v_0 = 20$ .) (b) Instability region (shaded) as a function of propulsion speed  $v_0$  and force coefficient  $\zeta$ . Along the dashed line  $v = 0$ , the upper half-plane would correspond to a negative effective swimming speed  $v < 0$ .

For a closure, we drop the second term corresponding to the second moment. Again, this approximation is only justified at the onset of a large-scale instability close to the homogenous state. We thus arrive at

$$\partial_t\mathbf{p}(\mathbf{r}, t) = -\frac{1}{2}\nabla(v\rho) + D\nabla^2\mathbf{p} - D_r\mathbf{p}. \quad (18)$$

The stationary solution of the two effective hydrodynamic equations (16) and (18) is  $\rho(\mathbf{r}, t) = \bar{\rho}$  and  $\mathbf{p}(\mathbf{r}, t) = 0$ . Clearly, for a constant effective speed  $v$  this solution is always stable.

Now suppose that  $\rho(\mathbf{r}, t)$  corresponds to a slowly varying density profile such that within the short range of the pair potential the density is approximately constant. We can then replace the *global density*  $\bar{\rho}$  in the expression for the effective swimming speed eq. (13) by the *local density* with  $v(\rho) = v_0 - \rho\zeta$ . Following ref. [23], we consider the limit of large length scales and time scales much longer than  $1/D_r$ . Equation (18) then implies the quasi-stationary solution

$$\mathbf{p} \approx -\frac{1}{2D_r}\nabla(v\rho) = -\frac{v_0 - 2\rho\zeta}{2D_r}\nabla\rho, \quad (19)$$

*i.e.*, the orientational field is adiabatically enslaved to the density and points along the density gradient. Plugging this result back into eq. (16) leads to the diffusion equation

$$\partial_t\rho = \nabla \cdot \left[ D + \frac{(v_0 - \rho\zeta)(v_0 - 2\rho\zeta)}{2D_r} \right] \nabla\rho \equiv \nabla \cdot \mathcal{D}\nabla\rho \quad (20)$$

with collective diffusion coefficient  $\mathcal{D}(\rho)$  governing the density relaxation. Instability of the homogenous suspension is signaled by  $\mathcal{D}(\bar{\rho}) < 0$ . From this criterion we find the instability region  $\zeta_- \leq \zeta \leq \zeta_+$  bounded by

$$\frac{\bar{\rho}\zeta_{\pm}}{v_*} = \frac{3}{4}(v_0/v_*) \pm \frac{1}{4}\sqrt{(v_0/v_*)^2 - 1} \quad (21)$$

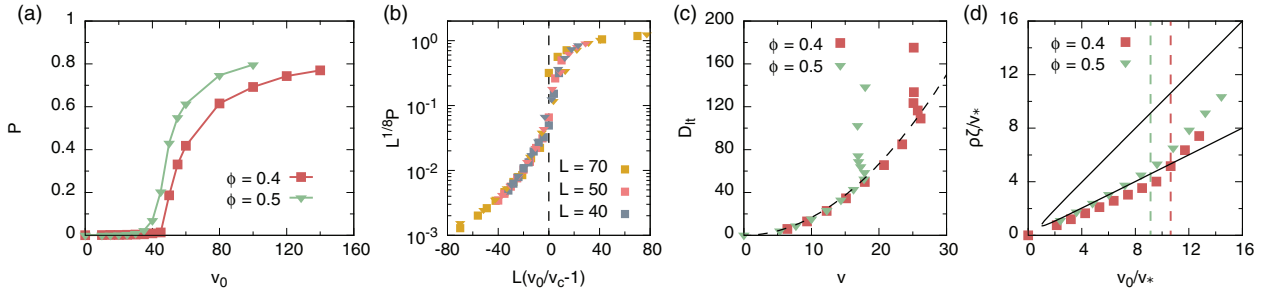


Fig. 2: (Color online) Simulation results for (almost) hard disks interacting via eq. (24): (a) size of largest cluster  $P$  as a function of propulsion speed  $v_0$  for two area fractions  $\phi$  using  $N = 4900$  particles. (b) Finite-size scaling using the equilibrium 2D-Ising exponents for densities  $\phi = 0.4$  ( $\blacksquare$ ,  $v_c \simeq 50$ ) and  $\phi = 0.5$  ( $\blacktriangledown$ ,  $v_c \simeq 38$ ) for three different system sizes  $N = L^2$ . (c) Long-time diffusion coefficient  $D_{\text{lt}}$  vs. the effective speed  $v = v_0 - \bar{\rho}\zeta$ . The dashed line shows  $D_{\text{lt}} = v^2/(2D_r)$ . (d) Reduced force coefficient  $\bar{\rho}\zeta/v_*$  as a function of reduced speed  $v_0/v_*$ , cf. fig. 1(b). The solid line encloses the instability region. The vertical dashed lines indicate the corresponding critical speeds  $v_c$ .

with minimal speed

$$v_* \equiv 4\sqrt{DD_r}. \quad (22)$$

Equation (21) constitutes our second main result. Figure 1(b) shows the instability region assuming that both the propulsion speed  $v_0$  and the coefficient  $\zeta$  can be controlled independently. Of course, keeping all other parameters fixed,  $\zeta$  is a function of  $v_0$  and thus describes a curve in this plot. Our theory is only able to predict the onset of this dynamical instability. Below we will demonstrate using computer simulations that phase separation ensues from this instability. Hence, phase separation is predicted to occur within the shaded region if  $\zeta(v_0)$  crosses the boundary. A curve  $\zeta(v_0)$  can enter the instability region for  $v_0 > v_*$  and, as we will demonstrate below, leave it for larger speeds corresponding to a reentrance into the disordered fluid phase.

From eq. (12) we can also determine the self-diffusion coefficient

$$D_{\text{lt}} \equiv \lim_{t \rightarrow \infty} \frac{1}{4t} \langle [\mathbf{r}(t) - \mathbf{r}(0)]^2 \rangle = D + \frac{v^2}{2D_r}, \quad (23)$$

*i.e.*, the long-time diffusion coefficient of the interacting suspension can be calculated as the diffusion coefficient of a free particle but employing the reduced swimming speed  $v$  instead of  $v_0$ . The swimming speed  $v$  can be calculated via eq. (13) and is not a fit parameter as in ref. [21].

**Brownian dynamics simulations.** – We test our theoretical predictions with Brownian dynamics simulations. We consider up to  $N = 4900$  particles in a quadratic box and employ periodic boundary conditions. The equations of motion eq. (1) are integrated with time step  $5 \cdot 10^{-6}$ – $10^{-5}$  depending on the speed  $v_0$ . Motivated by recent experiments [17], we first study a suspension of (almost) hard disks employing the WCA potential [27]

$$u(r) = \begin{cases} 4\epsilon \left\{ \left(\frac{\delta}{r}\right)^{12} - \left(\frac{\delta}{r}\right)^6 \right\} + \epsilon, & (r \leq 2^{1/6}\delta), \\ 0, & (r > 2^{1/6}\delta), \end{cases} \quad (24)$$

where we set the potential strength  $\epsilon = 100$ . Particles have diameter unity in reduced units. We set  $2^{1/6}\delta = 1$  so that interactions are only present for overlapping particles. We study two area fractions  $\phi = 0.4$  and  $\phi = 0.5$ , where  $\phi = \bar{\rho}\pi/4$ . Moreover, we assume that the no-slip boundary condition holds, which determines the rotational diffusion coefficient as  $D_r = 3$  in reduced units.

We perform a cluster analysis based on a simple overlap criterion. Two particles are considered as “bonded” if their distance is smaller than unity (they overlap), and a cluster is the set of all mutually bonded particles. As a geometrical order parameter, in fig. 2(a) we plot the mean size  $P$  of the largest cluster as a function of the propulsion speed  $v_0$ . For both densities there is a transition from the unordered, homogeneous phase to an ordered phase, where the largest cluster occupies a finite fraction of the system. This drive-induced transition occurs as we increase the speed  $v_0$  and resembles a second order transition, *i.e.*, the order parameter  $P$  does not jump but increases continuously.

In order to gain a first insight into the universality class of the transition, we have performed finite-size scaling [28]. To this end, we have simulated smaller systems with particles  $N = L^2$  for  $L = 40, 50, 70$ . We employ  $L$  as the relevant system size and not the actual length of the simulation box since the order parameter  $P$  is based on the fixed particle size. Defining  $\epsilon \equiv v_0/v_c - 1$ , finite-size scaling predicts the order parameter to behave like  $P_L(v_0) = L^{-\beta/\nu} \tilde{P}(L^{1/\nu}\epsilon)$  with universal scaling function  $\tilde{P}(x)$ . Figure 2(b) shows that the data for different system sizes indeed collapses onto a single curve using the equilibrium Ising exponents  $\nu = 1$  and  $\beta = 1/8$  even though their use lacks a firm theoretical basis. The quality of the collapse is somewhat better for  $v_0 \leq v_c$ . From the collapse we have estimated the critical speeds  $v_c \simeq 50$  ( $\phi = 0.4$ ) and  $v_c \simeq 38$  ( $\phi = 0.5$ ).

From the numerical data, we calculate the projection coefficient  $\zeta$  by evaluating the integral eq. (10). In fig. 2(c), the long-time self-diffusion coefficient  $D_{\text{lt}}$  is plotted as a



function of the effective speed  $v = v_0 - \bar{\rho}\zeta$ . Below the transition  $v_0 < v_c$ , the diffusion coefficient is indeed very well described by  $D_{\text{lt}} = D + v^2/(2D_r) \approx v^2/(2D_r)$  as predicted and confirms the validity of eq. (12). For  $v_0 > v_c$  we observe that the effective speed  $v$  stays approximately constant while the diffusion coefficient  $D_{\text{lt}}$  grows further. Note that in the phase-separated suspension the *global* speed  $v$  and diffusion coefficient  $D_{\text{lt}}$  are still calculated from all particles. Although particles are slower while part of a large cluster, there is a constant particle exchange between clusters and dilute phase leading to a monotonously increasing  $D_{\text{lt}}$  as a function of  $v_0$ . Finally, in fig. 2(d) we plot the force coefficient as a function of reduced speed  $v_0/v_*$ , where  $v_*$  follows from eq. (22) with the long-time diffusion coefficient  $D$  ( $\simeq 0.46, 0.36$  for  $\phi = 0.4, 0.5$ ) measured at equilibrium ( $v_0 = 0$ ). In agreement with fig. 2(a), for low speeds the value of  $\zeta$  corresponds to the homogeneous suspension. The speeds where  $\zeta$  crosses the stability boundary agree well with the finite-size scaling estimates of the critical speeds  $v_c$ .

The observed phase separation is a robust phenomenon that does not depend on the employed pair potential. For a demonstration we have gathered numerical data for three further potentials: (H) soft spheres with a harmonic repulsion  $u(r) = \varepsilon(r-1)^2$  for  $r \leq 1$  and  $u(r) = 0$  otherwise [21], (GCM) the Gaussian core model  $u(r) = \varepsilon e^{-r^2}$ , and (Y) the screened Coulomb or Yukawa potential  $u(r) = \varepsilon e^{-\kappa(r-1)-1}/r$  with  $\kappa = 5$ . For the last two potentials we assume the effective particle diameter to be unity. In this section, we relax the coupling of rotational and translational diffusion by setting  $D_r = 3 \cdot 10^{-5}$  and neglecting the translational noise altogether, assuming that the effective noise induced by the propulsion is dominant. To be as general as possible, we absorb the strength of the potential in the modified time unit  $\tau_0/\varepsilon$ .

We study the three potentials for different speeds  $v_0$  at densities: (H)  $\phi = 0.7$ , (GCM)  $\phi = 0.091$ , and (Y)  $\phi = 0.2$ . Figure 3(a) shows the structure factor  $S(q) \equiv \sum_{kk'} \langle e^{i\mathbf{q}\cdot(\mathbf{r}_k - \mathbf{r}_{k'})} \rangle / N$  for different speeds  $v_0$ . For all three potentials, we see an abrupt change for small  $q$  from approaching a finite value  $S(0)$  to a power law, whereby the latter signals phase separation. In fig. 3(b), the force coefficient  $\zeta$  is plotted as a function of the speed  $v_0$ , where open symbols correspond to the homogeneous, and closed symbols to the phase-separated suspension as determined from the behavior of the structure factor at small  $q$ . Since translational noise is neglected,  $v_* \simeq 0$  is very small and the suspension clusters almost immediately. Going to larger speeds  $v_0$ , we observe a reentrance into the fluid phase. Finally, fig. 3(c) shows a snapshot for the harmonic potential (H) at  $v_0 = 0.2$  in the instability region showing a single large cluster surrounded by a dilute fluid phase. In contrast, in fig. 3(d) at higher speeds, the cluster has dissolved and the suspension is homogeneous again. Hence, beside the ordering transition, also a reentrance into the disordered fluid at higher propulsion

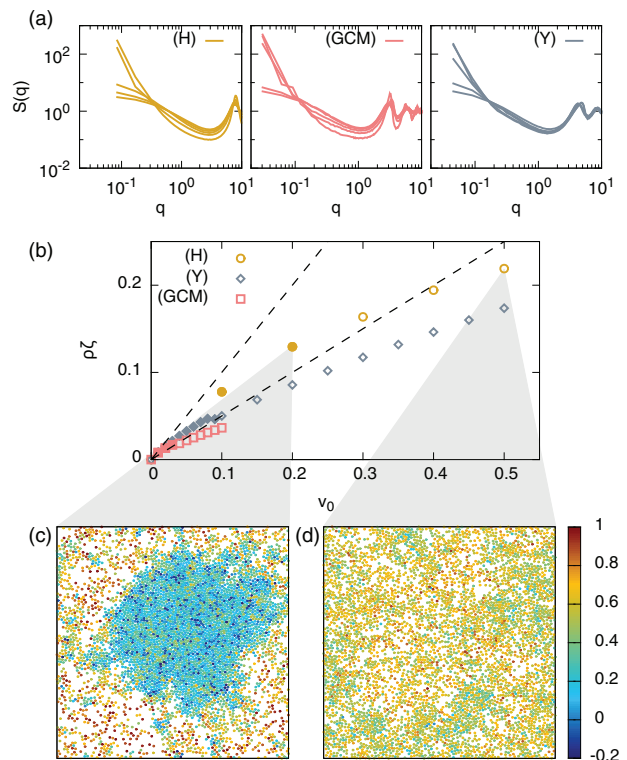


Fig. 3: (Color online) Simulation results neglecting translational diffusion for: (H) soft spheres with harmonic repulsion, (GCM) the Gaussian core model, and (Y) the Yukawa potential. (a) Structure factors  $S(q)$  for different speeds  $v_0$  increasing from bottom to top. (b) Force coefficient  $\zeta$  as a function of the propulsion speed  $v_0$  (note that the unit of time compared to fig. 2 is  $1/100$ ). Open symbols correspond to homogeneous systems, closed symbols to phase-separated systems. (c) Snapshot at speed  $v_0 = 0.2$  and (d) at speed  $v_0 = 0.5$  for (H). Every particle is colored according to eq. (25) with  $\Delta t = 25$  quantifying the persistence of particle motion with respect to the initial particle orientation.

speeds can be observed. The color code corresponds to the quantity

$$\alpha_k \equiv \mathbf{e}_k(t) \cdot [\mathbf{r}_k(t + \Delta t) - \mathbf{r}_k(t)] / (v_0 \Delta t) \quad (25)$$

measuring the persistence of particle motion over the time interval  $\Delta t$  with respect to the initial orientation. For  $\Delta t \ll 1/D_r$  we expect for a free particle  $\alpha_k \sim 1$  while for  $\alpha_k < 0$  a particle has actually moved against the propelling force. We find that in dense regions particles are indeed less likely to move along their orientations.

**Discussion.** – What is the origin of the dynamical instability? The emerging microscopic picture is the following: particles collide and, due to the persistence of their swimming motion, they block each other forming a small cluster [14,15,17]. Collisions with other particles lead to a growth of the cluster. For a particle situated in the rim of the cluster to become free, it has to wait a time  $\sim 1/D_r$  for its orientation to point outward. Depending on the ratio between this waiting time and the collision time

controlled by the propulsion speed, there is either a stable steady state corresponding to a homogeneous suspension with dynamically evolving clusters, or clusters grow until the largest cluster occupies a finite fraction of the system.

This microscopic picture is confirmed by the effective large-scale evolution equations. The relaxation of a density fluctuation is dominated by the flux  $\mathbf{p}$  along the local mean orientation, which is given by  $\mathbf{p} \sim -\nabla(v\rho)$ . Note that the “potential” is the product of swimming speed  $v$  and density  $\rho$ . Now imagine a small region in which the density is increased but at the same time the swimming speed is decreased. The density of the surrounding region is smaller but the speed of particles is higher such that the product  $v\rho$  might be larger than that of the dense region. In this case there is a flux towards the *denser* region and phase separation sets in.

**Conclusions.** – We have studied a dynamical instability in a minimal model for self-propelled repulsive disks for densities below the freezing transition [29]. The instability results in phase separation and intrinsically requires the system to be driven away from thermal equilibrium. It cannot be modelled as an effective isotropic attraction that shifts an equilibrium coexistence line [30]. We have shown that instead the relevant mechanism is a force imbalance due to the propulsion, which implies an effective swimming speed that depends on the density.

Starting from the Smoluchowski equation, we have derived a closed equation of motion for the tagged particle density by decomposing the mean force due to the surrounding particles into two independent contributions: along the particle orientation and along the density gradient. We have employed Brownian dynamics simulations to calculate the two free parameters entering this equation: the force coefficient  $\zeta$  and the passive long-time diffusion coefficient  $D$ . Using these values as input, our theory is able to reproduce the single-particle long-time diffusion coefficient in the homogeneous suspension and to predict the onset of the instability. For different potentials we have confirmed numerically that there is also a reentrance into the disordered fluid at sufficiently high propulsion.

Here we have studied a two-dimensional system but our approach also extends to three dimensions. For the sake of clarity and brevity, we have neglected hydrodynamic interactions. At least pairwise hydrodynamic interactions are easily incorporated in our framework and will change the coefficients  $D$ ,  $D_T$ , and  $\zeta$ . However, the qualitative predictions, and in particular the instability diagram fig. 1(b), will remain unchanged. Models that, *e.g.*, imply a reorientation of particles during collisions instead of a persistent motion (see, *e.g.*, ref. [31]) might move out of the instability region either because  $v_*$  is increased or the force coefficient  $\zeta$  is reduced. While we have used computer simulations in order to calculate  $\zeta$ , as a next step it will be desirable to go to the next level of the BBGKY hierarchy in order to calculate the anisotropic pair distribution, and therefore the force coefficient  $\zeta$ , from first principles.

\*\*\*

This work has been supported financially by the DFG within SFB TR6 (project C3) and by the ERC (advanced grant INTERCOCOS under project number 267499).

## REFERENCES

- [1] RAMASWAMY S., *Annu. Rev. Condens. Matter Phys.*, **1** (2010) 323.
- [2] DRESCHER K. *et al.*, *Proc. Natl. Acad. Sci. U.S.A.*, **108** (2011) 10940.
- [3] CAVAGNA A. *et al.*, *Proc. Natl. Acad. Sci. U.S.A.*, **107** (2010) 11865.
- [4] VICSEK T. *et al.*, *Phys. Rev. Lett.*, **75** (1995) 1226.
- [5] WENSINK H. H. and LÖWEN H., *Phys. Rev. E*, **78** (2008) 031409.
- [6] WENSINK H. H. *et al.*, *Proc. Natl. Acad. Sci. U.S.A.*, **109** (2012) 14308.
- [7] TANAKA H., *J. Phys.: Condens. Matter*, **12** (2000) R207.
- [8] VAN DER WAALS J., *Verh. K. Akad. Wet. Amsterdam (Sect. 1)*, **1** (1893).
- [9] LEVINE H., RAPPEL W.-J. and COHEN I., *Phys. Rev. E*, **63** (2000) 017101.
- [10] VICSEK T. and ZAFEIRIS A., *Phys. Rep.*, **517** (2012) 71.
- [11] NARAYAN V., RAMASWAMY S. and MENON N., *Science*, **317** (2007) 105.
- [12] PAXTON W. F. *et al.*, *J. Am. Chem. Soc.*, **126** (2004) 13424.
- [13] GOLESTANIAN R., LIVERPOOL T. B. and AJDARI A., *Phys. Rev. Lett.*, **94** (2005) 220801.
- [14] THEURKAUFF I. *et al.*, *Phys. Rev. Lett.*, **108** (2012) 268303.
- [15] PALACCI J. *et al.*, *Science*, **339** (2013) 936.
- [16] BUTTINONI I. *et al.*, *J. Phys.: Condens. Matter*, **24** (2012) 284129.
- [17] BUTTINONI I. *et al.*, *Phys. Rev. Lett.*, **110** (2013) 238301.
- [18] TAILLEUR J. and CATES M. E., *Phys. Rev. Lett.*, **100** (2008) 218103.
- [19] CATES M. E., MARENDUZZO D., PAGONABARRAGA I. and TAILLEUR J., *Proc. Natl. Acad. Sci. U.S.A.*, **107** (2010) 11715.
- [20] THOMPSON A. G., TAILLEUR J., CATES M. E. and BLYTHE R. A., *J. Stat. Mech.* (2011) P02029.
- [21] FILY Y. and MARCHETTI M. C., *Phys. Rev. Lett.*, **108** (2012) 235702.
- [22] REDNER G. S., HAGAN M. F. and BASKARAN A., *Phys. Rev. Lett.*, **110** (2013) 055701.
- [23] CATES M. E. and TAILLEUR J., *EPL*, **101** (2013) 20010.
- [24] HANSEN J. and McDONALD I., *Theory of Simple Liquids*, 3rd edition (Academic Press, Amsterdam) 2006.
- [25] TONER J. and TU Y., *Phys. Rev. Lett.*, **75** (1995) 4326.
- [26] BASKARAN A. and MARCHETTI M. C., *Proc. Natl. Acad. Sci. U.S.A.*, **106** (2009) 15567.
- [27] WEEKS J. D., CHANDLER D. and ANDERSEN H. C., *J. Chem. Phys.*, **54** (1971) 5237.
- [28] BINDER K., *Z. Phys. B*, **43** (1981) 119.
- [29] BIALKÉ, J., SPECK, T. and LÖWEN H., *Phys. Rev. Lett.*, **108** (2012) 168301.
- [30] SCHWARZ-LINEK J. *et al.*, *Proc. Natl. Acad. Sci. U.S.A.*, **109** (2012) 4052.
- [31] FIELDING S. M., arXiv:1210.5464 (2013).